

# Electronic Enclosures – plastic Product Selection Page 1

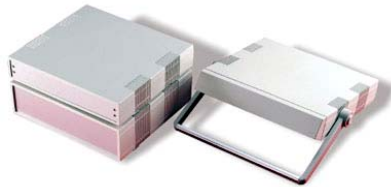
VERONEX:



Accepts Max PCB Size of:

mm	Inches	mm	Inches
35 X 50	1.38 X 1.97	55 X 55	2.17 X 2.17
35 X 80	1.38 X 3.15	75 X 100	2.95 X 3.94
55 X 110	2.17 X 4.33	110 X 95	4.33 X 3.74
75 X 150	2.95 X 5.91	110 X 145	4.33 X 5.71

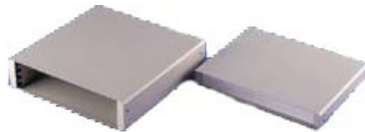
IBX Case



Accepts Max PCB Size of:

mm	Inches
233 X 240	9.17 X 9.45

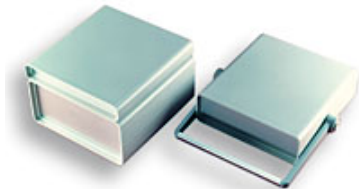
LBX Case



Accepts Max PCB Size of:

	mm	Inches
Single Euro Card	100 X 160	3.94 X 6.3
Extended Single Eurocard	100 X 220	3.94 X 8.66
Double Eurocard	233.35 X 160	9.19 X 6.3
Extended Double Eurocard	233.35 X 220	9.19 X 8.66
Max Size PCB	278.6 X 262.6	10.96 X 10.34

IDAS Case



Accepts Max PCB Size of:

mm	Inches
209 X 214	8.23 X 8.43

PATINA Case



Accepts Max PCB Size of:

mm	Inches	mm	Inches
160 X 100	6.3 X 3.94	100 X 50	3.94 X 1.99
120 X 100	4.72 X 3.94	110 X 60	4.33 X 2.36

# Electronic Enclosures – plastic Product Selection Page 2

APOLLO Case



Accepts Max PCB Size of:

mm	Inches	mm	Inches
140 X 80	5.51 X 3.15	190 X 130	7.48 X 5.12

GENERAL PURPOSE Case



Accepts Max PCB Size of :

mm	Inches	mm	Inches
55 x 35	2.17 x 1.38	95 x 55	3.74 x 2.17
155 x 85	6.1 x 3.35		

FLIP TOP Case



Accepts Max PCB Size of:

mm	Inches	mm	Inches
100 X 160	6.30 X 3.94	61 X 110	2.4 x 3.33

DESK TOP Case



Accepts Max PCB Size of:

mm	Inches
90 X 135	3.54 X 5.31